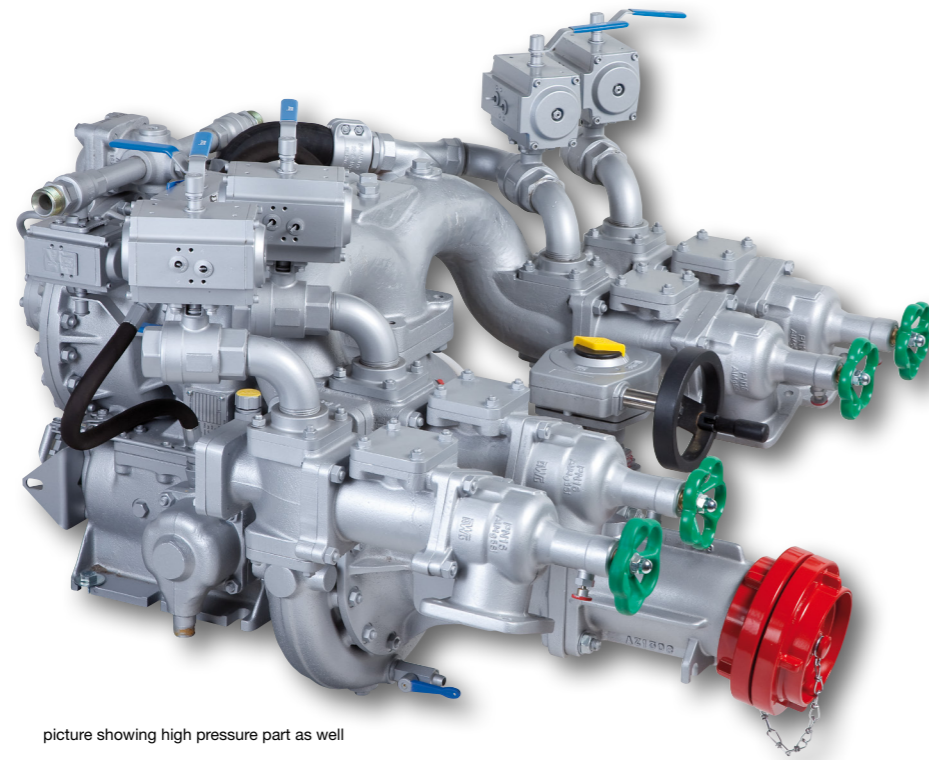




FPN 2000 (10-2000/15-2000)



picture showing high pressure part as well

Pump type	Art. no.	Rpm max. min <sup>-1</sup>	Power input max. kW (HP)	Pump output max. at 10 bar Hs 3,0 m l/min	Weight approx. kg	Dimensions approx. LxWxH mm
FPN 10-2000-1HL	022094	4450	105 (143)	2500	90	1010x920x850
FPN 10-2000-1HR	022095					
FPN 10-2000-2HL	022114	3200	86 (117)			
FPN 10-2000-2HR	022115					
FPN 15-2000-1HL	022098	4700	125 (170)			
FPN 15-2000-1HR	022099					
FPN 15-2000-2HL	022118	3500	108 (147)			
FPN 15-2000-2HR	022119					

**Basic equipment:**

1stage or 2stage centrifugal fire pump in clockwise or anti-clockwise rotational direction,  
1 suction inlet size A,  
2 delivery outlets size B,  
each 1 connection for rapid intervention line and tank filling line,  
1 connection for tank suction line lockable via butterfly valve.

**Priming system:** fully automatic TROKOMAT PLUS

**Gauges and controls:**

modular pump control system "Z-Control"  
(sub chapter "Z-Control")

**Paintwork:**

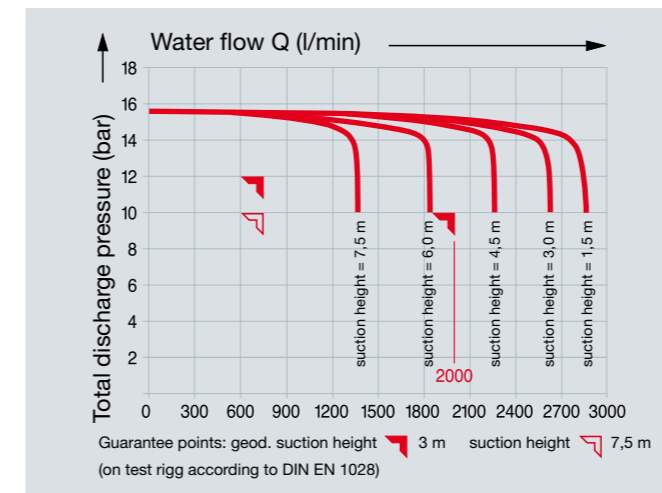
silver coloured RAL 9006

**Drive:**

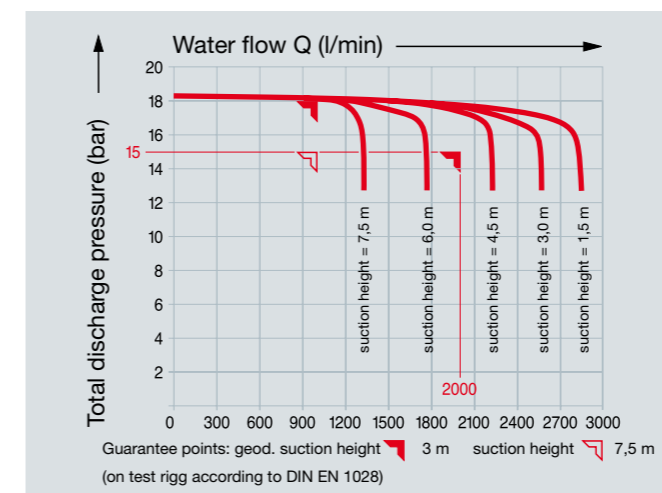
via joint shaft from p.t.o. of the vehicle gearbox



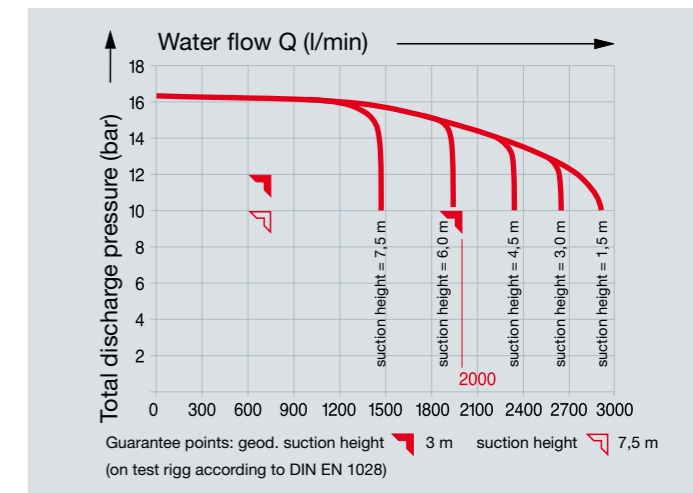
FPN 2000 (10-2000/15-2000)



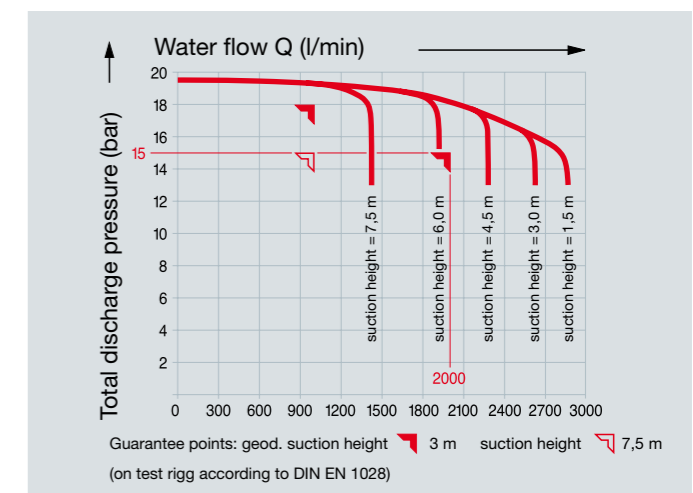
FPN 10-2000-1, test number: AZ 102010403



FPN 15-2000-1, test number: AZ 152010403



FPN 10-2000-2, test number: AZ 102020403



FPN 15-2000-2, test number: AZ 152020403

**Auxiliary equipment and systems**

on request, additionally charged:  
third and fourth delivery outlet, connection for a second rapid intervention line, line for turret, installation of a pump proportioner, automatic p.t.o. engagement (ANS), automatic pressure governor (TOURMAT D), automatic water supply system (AWZ), TROKOMAT PLUS shut-off, pumping out unit.

If an rpm adjustment is necessary (p.t.o.) various integrated pump gearboxes are available.